

Great Big Elephant Cushion



What you make:

A cushion with a finished size of 11 inches appliquéd with a big, beautiful lumbering elephant. Perfect for a little animal lover.

What you need:

11½ inch square **green fabric** for cushion front.
11½ inch square **fabric** for cushion back.
14 inch square **light blue fabric** for elephant appliqué.
12 inch square **cotton wadding**.
Polyester cushion stuffing.
Fusible webbing for appliqué.
Sewing supplies.

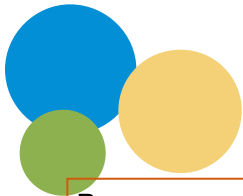
Note:

An accurate ¼ inch seam has been used throughout. Read all instructions before beginning this project.

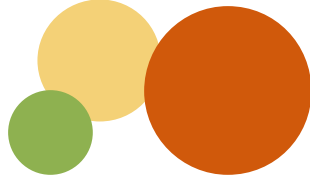
What you do:

Trace the elephant body and elephant head on the paper side of the fusible webbing.
Roughly cut around the shapes.
Iron shapes onto the reverse of chosen fabric.
Cut carefully around the drawn line.

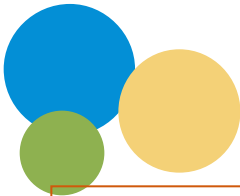





Remove paper backing and position appliqué shapes onto 11½ inch square green fabric cushion front. Iron shapes into place. Layer cushion front onto cotton wadding.



Stitch around appliqué shapes. Pictured cushion has been raw edge appliquéd. Set machine for free motion stitching, then stitch close to the edge of the shapes with three rows of stitching in a matching thread. Stitch an eye on the head. Alternately, stitch around the shapes using a machine zig-zag stitch or hand stitch using a blanket stitch.

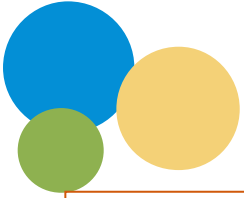


With right sides together lay the backing fabric onto the cushion front. Pin into place matching all sides. Stitch the cushion front and cushion back together using a ¼ inch seam. Leave a three inch section at the bottom of the cushion unstitched.



Turn the cushion out through the unstitched opening.

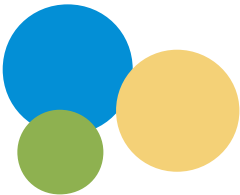




Fill the cushion with polyester stuffing through the opening.



Hand stitch the opening closed.



This completes your elephant cushion.



